



CONE HEALTH REHABILITATION CENTER Comprehensive Program

Report Card 2025

OUR PROGRAM

Making a decision about where to receive care can be a difficult decision to reach. Inpatient Rehabilitation is part of a strong continuum of care starting with acute care and ending with therapy and Physical Medicine and Rehabilitation follow up. Rest assured if you choose Cone Health Rehabilitation Center we will treat you and your family like our own. We want to exceed your expectations and will plan your care around meeting your goals. Below are a few highlights about our program:

- 30 year CARF accredited facility
- Board Certified Physical Medicine and Rehabilitation physicians
- Certified Rehab Registered Nurses
- Therapists with Diagnostic Specific Specialty Certification



Satisfaction With Program



At discharge, patients rate our care 4.70 stars.¹

Characteristics of Patients Served

Age range is 18 - 103.

During 2025, the Cone Health Rehabilitation Center cared for 948 patients. Patients received an average of 3.31 hours of therapy per day. Patients spent an average of 13.5 days in the Cone Health Rehabilitation Center.

Reaching Individual Goals

Reaching your goals is our primary focus in rehab. 90 percent of the patients who completed our program successfully achieved the goals set with their care team.

ACCOMMODATIONS

We have flexible visiting hours and encourage family members to participate in your care. We have specially equipped beds to help reduce falls. We perform hourly rounding to ensure your safety and comfort and provide sleeper recliners and cots so your family member can stay with you.



Patients' Daily Functional Progress

(Average Functional Change Score Per Day)²

Cone Health → 3.05

Nation → 2.65

If you would like to learn more about our program, call (336) 832-8153 to speak with one of our admissions coordinators.

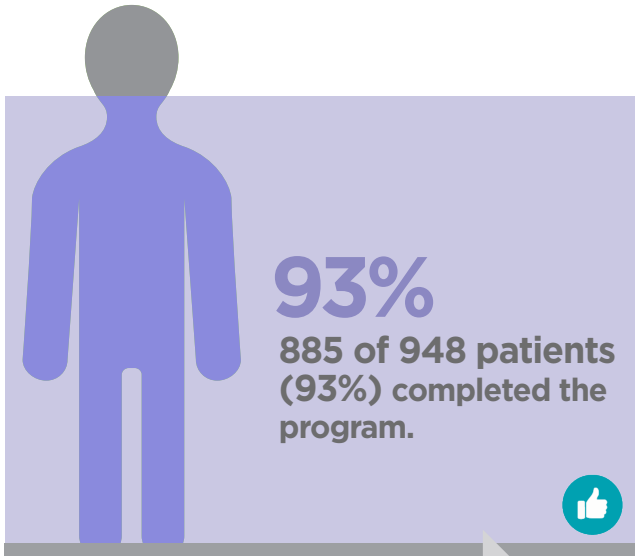
¹ Press Ganey

² eRehab



CONE HEALTH REHABILITATION CENTER Comprehensive Program

Report Card 2025



Nation 90%

61 patients (6.4%) could not complete the program and were transferred back to an acute hospital for additional care.

Cone Health 6.4%

Nation 10.2%



817 patients (86%) went home after completing the program.

Cone Health 86%

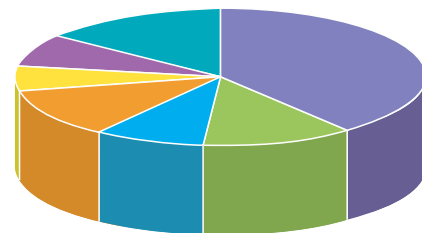
Nation 78%

64 patients (7%) went to a skilled nursing facility/ sub-acute setting after completing the program.

Cone Health 7%

Nation 11%

Impairment Groups



Stroke	372
Brain Injury	122
Spinal Cord Injury	72
Orthopedic	119
Limb Loss	48
Neurological	57
General Rehab/Medical	158
Total	948

For additional information about outcomes and Rehabilitation programs or to make a referral, please contact our Admissions Coordinator at 336-832-8153.

